



FASSON CONNECT - SWIFT, SECURE & SIMPLE

Superior Labels cuts order times using The Shuttleworth MIS & Fasson Connect



Superior Labels were established in 1990 and are a key supplier of label products to the food, pharmaceutical, toiletries and automotive sectors. Until recently, Superior Labels ordered Avery Dennison's Fasson labelstock via their web site – placing up to 30 orders a day. Although the system worked well, it was

time-consuming as the orders had to be entered twice. In order to reduce delays and improve their ability to record and track orders, in November 2007 Superior Labels decided to move to an online ordering

solution. Having chosen The Shuttleworth Management Information System (MIS), their next step was to integrate it directly with Avery Dennison's Fasson Connect e-business portal.

Immediate benefits

Sharon Preston, Customer Services Manager at Superior Labels says: 'Having an MIS means that we are now a highly efficient company, and the support we receive from Shuttleworth's backroom support team is second to none.'

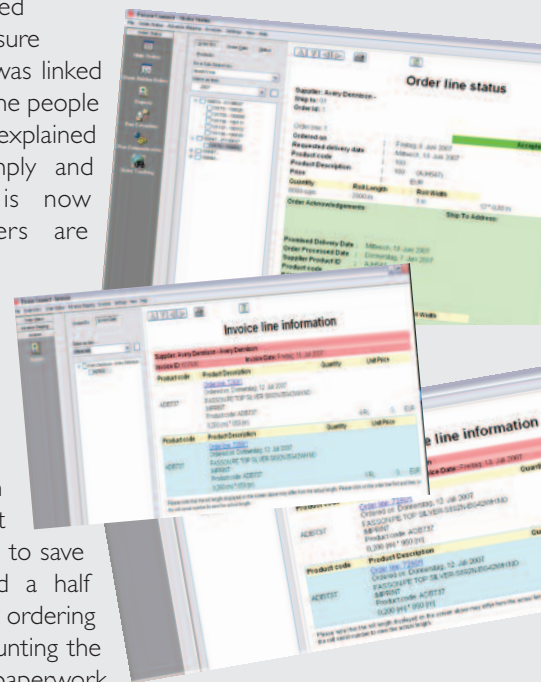
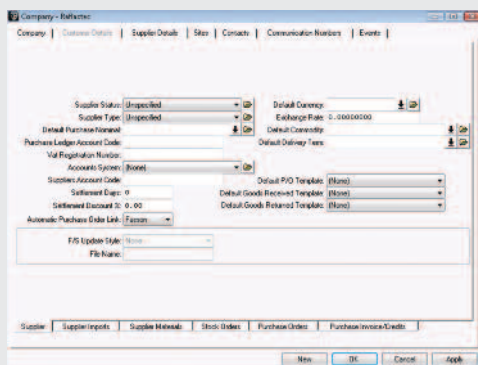
'The benefits of using Shuttleworth MIS together with Fasson Connect have been immediate. When we are placing up to 30 orders a day, this new system frees up valuable time. In addition, it virtually eliminates errors, ensuring that every order placed is correct.' says Gina Coplan, Buyer at Superior Labels

Easy to install, with instant savings

Avery Dennison assisted Superior Labels to ensure that their new system was linked in to Fasson Connect. 'The people from Avery Dennison explained everything to me simply and clearly. Now there is now duplication, the orders are entered in The Shuttleworth System, as soon as the order is approved it is sent to Fasson to be processed and if there is ever a problem, we are notified' says Gina. In 2007, Fasson Connect enabled Superior Labels to save a minimum of six and a half working days on the ordering process alone – not counting the elimination of extra paperwork and the reduction of human error. In 2008, further efficiency gains are expected.

Fasson Connect – swift, secure, and simple

Fasson Connect is an electronic ordering system that saves time and money by reducing paperwork and limiting the possibility for human error. Orders are processed directly and orders can be made 24 hours a day, seven days a week. Orders can even be pre-set. In addition, Fasson Connect offers increased security. All data is encrypted, and transmission is immediately confirmed. Using Fasson Connect removes the need for manual or double data entry, refocusing resources on value-added activities.



CASE STUDY